

MANUFACTURING



ACI Glass Packaging
Adbri Masonry
Adelaide Brighton
Albright and Wilson
Amoco Australia
Ampcor
Aperio Group - Finewrap
AstraZeneca
Austrak
Australian Country Choice
Australian Hardboards
Australian Pacific Paper Products
Australian Paper
Australasian Lubricants Mfg Co.
Big River Timbers
Boeing Hawker de Havilland
Boral Timbers
Calum Textiles
Cadbury Schweppes
Carter Holt Harvey
Cheetham Salt
Ciba Specialty Chemicals
Coca-Cola Amatil
Cochlear
Colgate-Palmolive
CSR Readymix
CSR Timber Products
Dyno Nobel
Fairfax Printers
Fletcher Challenge
GlaxoSmithKline
Hans Continental Smallgoods
Herron Pharmaceuticals
Holden
- Vehicle Operations
- Service Parts Operation
Incitec Pivot
Inova Pharmaceuticals
James Hardie Building Products
JDS Uniphase
Kelloggs
Kraft Foods
Lion Nathan
Mars - Snackfood, Food, Petfood
Merck Sharp & Dohme
Merino
MM Kembla
National Foods
National Foods
Nestle
Norske Skog
Nufarm
Nufarm Coogee
Olex
OneSteel
Orica Explosives
Orrcon
OSI International
Palmer Tube Mills
Paperlinx
Pharmacia Corporation
Philip Morris
Prysmian Cables & Systems
Ralston Purina
SCA Hygiene
Sunstate Cement
Tasman Insulation
Ticor Chemical
Top Taste Cakes
Uncle Ben's
Unilever Foods
Vinidex
Visy Paper
Weyerhaeuser Australia
Wellard Feeds
Wilson Transformer

SERVICES



AAP Communications
ADT Security
Ansett Airlines
Australian Defence Force
Australasian Maritime Systems
B & J Catalano
Beaumont Transport
BHP Transport
Brisbane Airport Corporation
Brisbane Airport Fuel Services
Brisbane Markets
Burswood Casino
Cairns Port Authority
Caltex Aviation
Coles Group Logistics
Colorado Group
Dalrymple Bay Coal Terminal
Dept. for Correctional Services - SA
Department of Immigration
DP World
First Data Resources
Fremantle Port Authority
Gladstone Port Authority
Global Renewables
Golden Casket Lottery
IBM Australia
Intabill
International SOS
IntraPower
Intrepid Travel
Kempsey Shire
Kyabra Community Association
McIver Transport
Melbourne Airport Refuellers
Newcastle Port Corporation
NSW Lotteries
NT Correctional Services
Oasis Shopping Centre
Office of Transport Security

P&O Automotive and General Stevedoring
Port Kembla Port Corporation
Ports Corporation of Qld
Qld Bulk Handling
Qld Corrective Services
Qld Dept. of Main Roads
Qld Health
- Aged & Disability Services
- Royal Brisbane Women's Hospital
Qld Investment Corporation
Qld Motorways
Qld Rail
Qld Transport
- Translink
- Maritime Safety Qld
RAA
RACQ
Royal Flying Doctor Service
RSPCA
Save the Children
SBS
SkyCity Casino
Solomon Islands Prison Service
Suncorp
STB Transport
Svitzer Towage Services
Sydney Airport Fuel Services
Sydney Ports Corporation
Sydney West Area Health Service
Tasmanian Prison Service
Tattersall's
Toll Resources
Townsville Port Authority
Transmission Pipelines Australia
University of SA
University of WA
Whakatane Hospital
Youth Substance Abuse Service

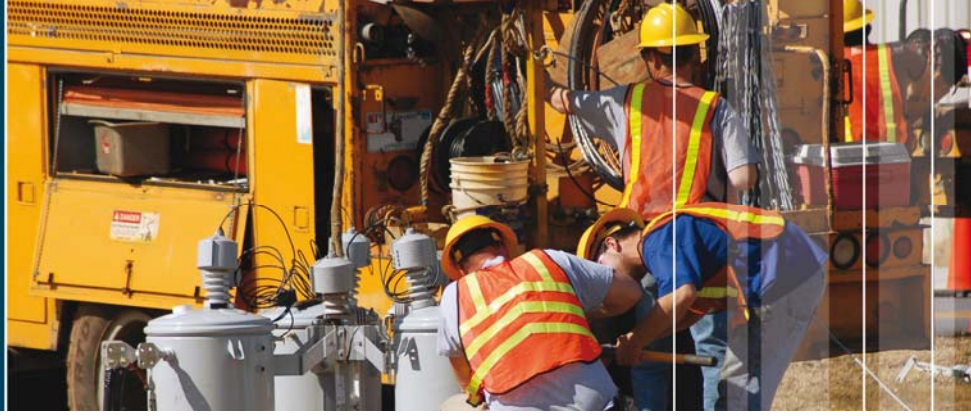
MINING



Anglo Coal
Argyle Diamonds
Barrick Gold
Batu Hijau (Indonesia)
Beaconsfield Gold Mine
BHP Billiton Iron Ore
BHP Billiton Mitsubishi Alliance
Blackwater Coal Mine
Blair Athol Coal
Boddington Gold Mine
Broken Hill Mine
Bucyrus
Bulga Coal
Bulong Nickel Operations
Cadia Gold Mine
Cannington Mine
Caval Ridge Project
Century Zinc Mine
Cracow Gold Mine
Croesus Mining
CSA Mine
Daisy Milano Gold Mine
Darlot Gold Mine
Dawson Mine (Moura)
Democratic Rep. of Congo
Dendrobium Mine
Donaldson Coal
Drayton Coal
Emperor Gold Mine (Fiji)
Foxleigh Mine
Glendell Coal Mine
Greenbushes Mine
Golden Grove
Goonyella Riverside
Gove Mine
Gregory Crinum
Gwalia Consolidated
Hastings Deering
HSE Mining
HWE Mining
HMP Constructions
Jundee Gold Mine
Kalgoorlie Cons. Gold Mines
Kanowna Belle Gold Mines
Kestrel Project

Lawlers Gold Mine
Leighton Contractors
Liddell Coal Operations
Lihir Gold (PNG)
Loy Yang Mine
Marion Haulage
McArthur River Mining
Metso Minerals
Mining & Civil Australia
Moranbah North Coal
Mount Isa Mines
Mount Keith
Murrin Murrin Operation
Newcrest Mining
Newmont Mining
Nkomati Mine (S.Africa)
Norwich Park Coal Mine
Ok Tedi Mining (PNG)
Olympic Dam
Oz Minerals
Pajingo Gold Mine
Panorama Project
Perilya
Plutonic Gold Mine
Porgera Joint Venture (PNG)
Prominent Hill
Pt Kelian Eq. Mining (Indonesia)
Queensland Magnesia
Ranger Mine
Renison Tin
Rio Tinto
Roche Mining
Rolleston Coal
Saraji Mine
Stawell Gold Mines
Tanami Gold Mine
Tarong Coal
Tasmanian Minerals Council
Telfer Gold Mine
Thiess Mining
Ulan Coal
Wandoan Project
Worsley Alumina
Xstrata

UTILITIES



Agility
CH4 Gas
Citipower
City of San Francisco
Cougar Energy
Country Energy
Dayton Power & Light
Duke Energy
Energex
Energy Australia
Energy Brix
Energy Developments
Eraring Power Station
ETSA Utilities
Genesis Energy
Gladstone LNG Plant
Millmerran Operating Company
Australian Energy Market Operator
NEMMCO
NRG Gladstone Operating Services
Origin Energy
Pacific Gas & Electric
Powercor
Santos
Southern Rural Water
Tarong Energy
Transend
TransGrid
VENCORP
Verve Energy
Woodside Energy

REFINERIES



Ampol Refineries (Caltex)

British Petroleum

Bundaberg Sugar Ltd

Caltex

- Johannesburg

- Kurnell

Capral Australia

CSBP (Wesfarmers)

Mobil Oil

Rio Tinto Aluminium

- Yarwun

- Bell Bay

Shell

Tomago Aluminium

Worsley Alumina

Xstrata

- Mount Isa Operations

- Townsville Operations



Although Shiftwork Solutions is based in Australia, our experience is global. Our project locations include the following countries:

- Australia
- Fiji
- Indonesia
- Malaysia
- New Zealand
- Papua New Guinea
- Solomon Islands
- South Africa
- United Arab Emirates
- United States of America

Shiftwork Solutions also provides expert commentary for the media and in other public forums including:

- The ABC's "7:30 Report"
- Channel 9's "What's Good for You"
- Channel 7's "Today Tonight"
- ABC Radio
- Australian Industrial Relations Commission
- Federal Magistrates Court of Australia